

Technical data sheet



Product features

Freezing cabinet 700 l GN 2/1, stainless steel, right door

| | | |
|--------------|-----------------|----------|
| Model | SAP Code | 00014289 |
|--------------|-----------------|----------|



- GN / EN size in device: GN 2/1
- Minimum device temperature [°C]: -18
- Maximum device temperature [°C]: -22
- Insulation thickness [mm]: 60
- Control type: Digital
- Opening of device: Hinges on the right
- Automatic defrost: Yes
- Annual energy consumption [kWh]: 2435

| | | | |
|----------------------------|--------------------|--|--------|
| SAP Code | 00014289 | Gross Volume [m3] | 1.279 |
| Net Width [mm] | 693 | Net Volume [m3] | 1.149 |
| Net Depth [mm] | 826 | Number of GN / EN | 3 |
| Net Height [mm] | 2008 | GN / EN size in device | GN 2/1 |
| Net Weight [kg] | 118.00 | Minimum device temperature [°C] | -18 |
| Power electric [kW] | 0.879 | Maximum device temperature [°C] | -22 |
| Loading | 230 V / 1N - 50 Hz | Refrigerant | R290 |
| Energy class | D | Climate class | 4 |

Technical data sheet



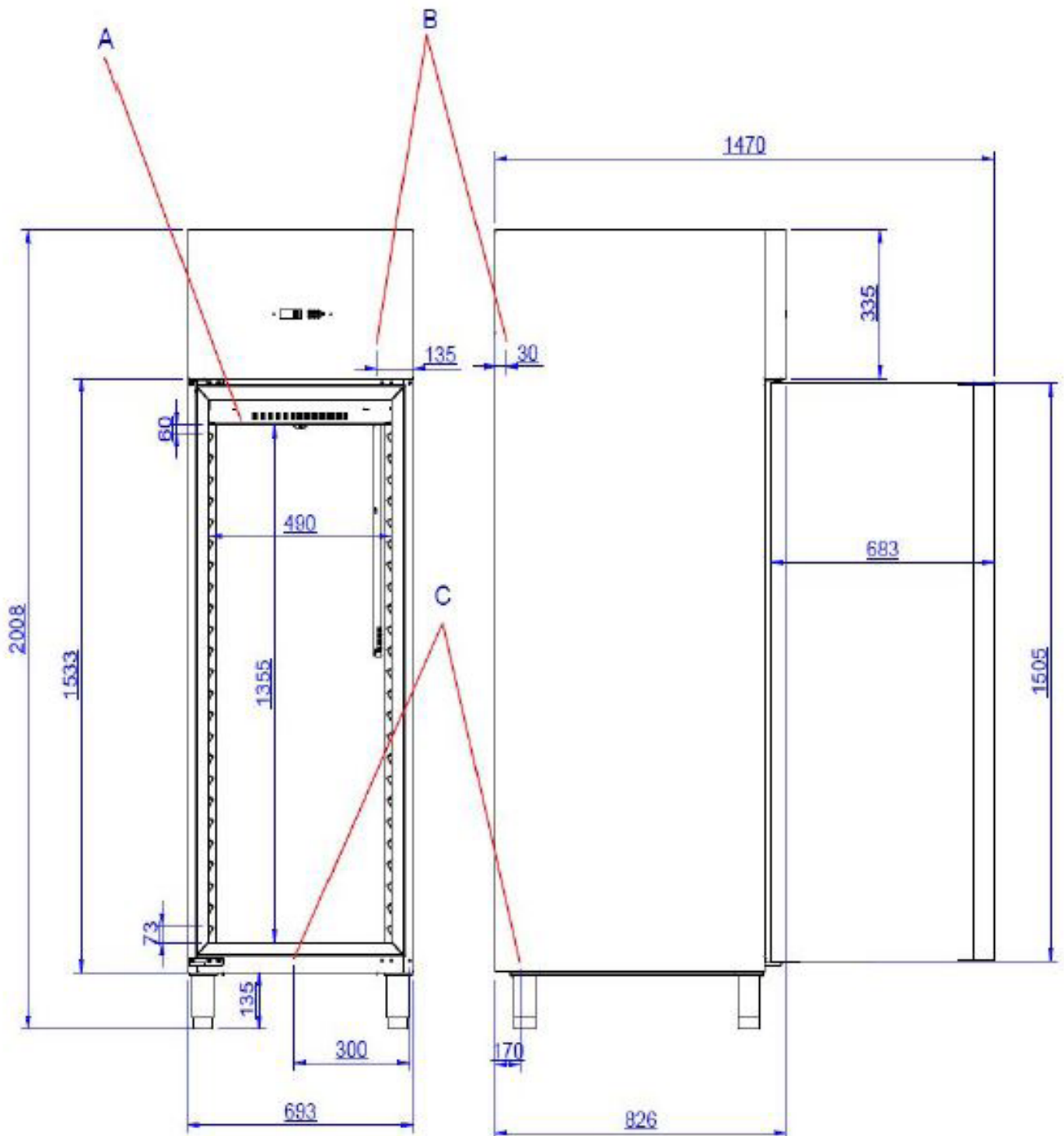
Technical drawing

Freezing cabinet 700 l GN 2/1, stainless steel, right door

Model

SAP Code

00014289



Technical data sheet



Technical parameters

Freezing cabinet 700 l GN 2/1, stainless steel, right door

Model

SAP Code

00014289

1. SAP Code:

00014289

2. Net Width [mm]:

693

3. Net Depth [mm]:

826

4. Net Height [mm]:

2008

5. Net Weight [kg]:

118.00

6. Gross Width [mm]:

700

7. Gross depth [mm]:

850

8. Gross Height [mm]:

2150

9. Gross Weight [kg]:

149.00

10. Device type:

Electric unit

11. Power electric [kW]:

0.879

12. Loading:

230 V / 1N - 50 Hz

13. Energy class:

D

14. Refrigerant:

R290

15. Cooling type:

Dinamic

16. Material:

Stainless steel

17. Min ambient temperature [°C]:

10

18. Max ambient temperature [°C]:

43

19. Additional information:

The shelves are removable and adjustable

20. Device properties 2:

Freezing

21. GN / EN size in device:

GN 2/1

22. Number of GN / EN:

3

23. Gross Volume [m3]:

1.279

24. Net Volume [m3]:

1.149

25. Adjustable feet:

Yes

26. Insulation thickness [mm]:

60

27. Opening of device:

Hinges on the right

28. Number of doors:

1

Technical data sheet



Technical parameters

Freezing cabinet 700 l GN 2/1, stainless steel, right door

Model

SAP Code

00014289

29. Unit:

Yes

34. Automatic defrost:

Yes

30. Control type:

Digital

35. Thaving cycle:

Yes

31. Annual energy consumption [kWh]:

2435

36. Number of grids:

3

32. Minimum device temperature [°C]:

-18

37. Climate class:

4

33. Maximum device temperature [°C]:

-22

38. Cross-section of conductors CU [mm²]:

0,5

- Výkon (kW): 2,4-3,3 (230 V)